

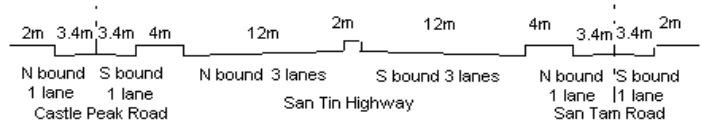
YEAR

2022

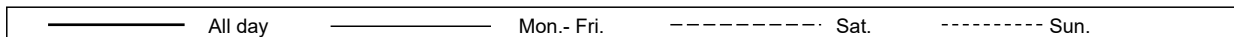
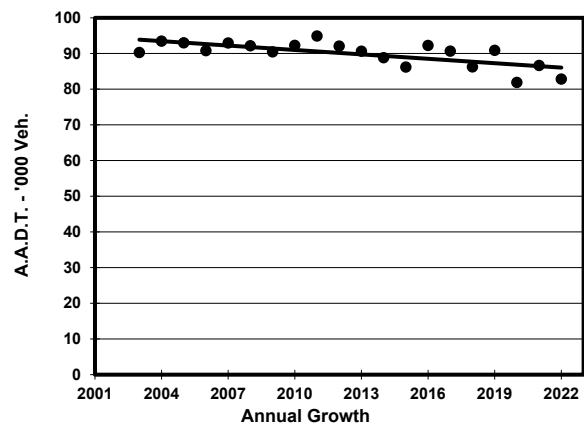
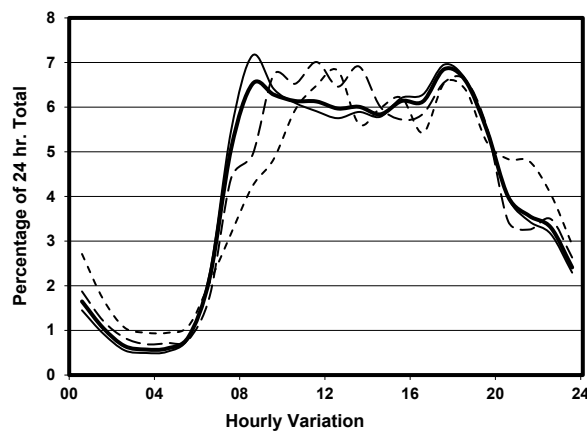
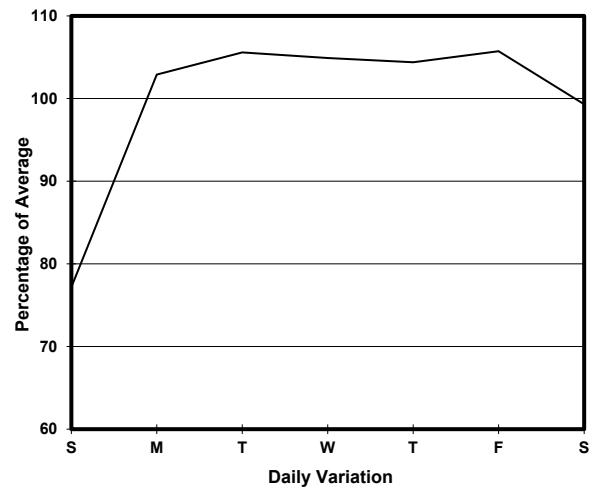
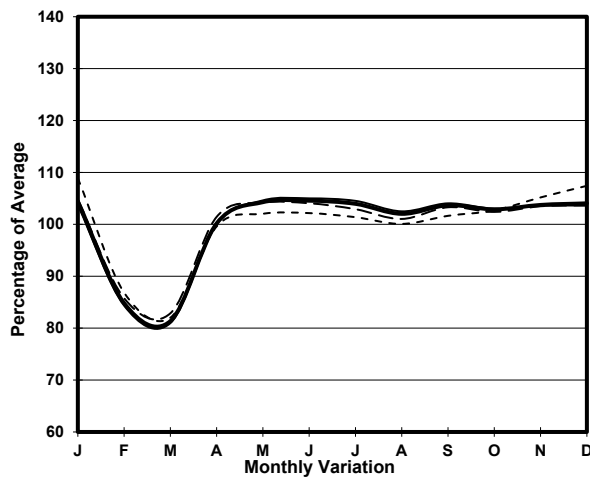
LINK SAN TIN HIGHWAY, CASTLE PEAK RD & SAN TAM RD
(from KAM TIN RD to FAIRVIEW PARK BOULEVARD)

CORE STATION
ROAD NETWORK
ROAD TYPE

5016
MAJOR
PRIMARY DISTRIBUTOR



1. TRAFFIC FLOW VARIATION AND GROWTH



2. TRAFFIC CHARACTERISTICS (BY DIRECTION)

| Parameter | All - Day | Mon. - Fri. | Sat. | Sun. |
|--------------------------------------|-----------|-------------|-----------|-----------|
| SOUTH BOUND | | | | |
| A.A.D.T. | 41740 | 44090 | 41730 | 33650 |
| R 12 / 24 - % | 72.9 | 73.8 | 72.7 | 67.2 |
| R 16 / 24 - % | 89.2 | 89.9 | 88.3 | 86.1 |
| AM Peak Hour | 0800-0900 | 0800-0900 | 0900-1000 | 0900-1000 |
| One-way flow at AM peak hour | 2650 | 3070 | 2460 | 1620 |
| T - % (AM) | - | 21.1 | - | - |
| PM Peak Hour | 1800-1900 | 1800-1900 | 1700-1800 | 1800-1900 |
| One-way flow at PM peak hour | 2850 | 2960 | 2860 | 2550 |
| T - % (PM) | - | 10.5 | - | - |
| Prop.of commercial vehicles - 16 hr. | - | 19.4 | - | - |
| NORTH BOUND | | | | |
| A.A.D.T. | 41080 | 43700 | 41570 | 31120 |
| R 12 / 24 - % | 74.5 | 75.3 | 74.7 | 68.2 |
| R 16 / 24 - % | 90.8 | 91.4 | 90.6 | 87 |
| AM Peak Hour | 0800-0900 | 0800-0900 | 0900-1000 | 0900-1000 |
| One-way flow at AM peak hour | 2750 | 3220 | 3140 | 1510 |
| T - % (AM) | - | 15.2 | - | - |
| PM Peak Hour | 1700-1800 | 1700-1800 | 1800-1900 | 1700-1800 |
| One-way flow at PM peak hour | 2950 | 3270 | 2650 | 1990 |
| T - % (PM) | - | 17.9 | - | - |
| Prop.of commercial vehicles - 16 hr. | - | 20 | - | - |

3. OTHER INFORMATION AND COMMENT

4. Vehicle classification and occupancy - Monday to Friday

| Time | | Class of vehicle | | | | | | | | | |
|------------------------|-----|------------------|----------------|------|---------------|------|------------|-------|----------------|---------|------|
| | | Motor Cycle | Private Car | Taxi | Private LB | PLB | Goods veh. | | Non Fr. Bus | Fr. Bus | |
| | | | | | | | Light | M & H | | SD | DD |
| 0700-0800 | Pro | 1.9 | 52.7 | 6.8 | 0.6 | 3.3 | 16.5 | 14.8 | 1.9 | 0.1 | 1.5 |
| | Ocp | 1.1 | 1.2 | 1.9 | 5.1 | 16.1 | 1.3 | 1.1 | 16.8 | 1.0 | 63.7 |
| 0800-0900 Peak hour | Pro | 1.3 | 52.4 | 6.7 | 1.0 | 2.8 | 17.7 | 14.8 | 2.2 | 0.0 | 1.1 |
| | Ocp | 1.1 | 1.2 | 1.6 | 3.9 | 14.4 | 1.2 | 1.1 | 17.1 | 0.0 | 56.8 |
| 0900-1000 | Pro | 1.3 | 47.7 | 4.4 | 0.4 | 1.9 | 19.7 | 22.4 | 1.0 | 0.0 | 1.1 |
| | Ocp | 1.1 | 1.3 | 1.6 | 4.5 | 11.3 | 1.2 | 1.2 | 9.1 | 0.0 | 31.8 |
| 1000-1100 | Pro | 0.9 | 35.6 | 5.2 | 0.2 | 2.4 | 29.9 | 23.7 | 1.1 | 0.0 | 1.1 |
| | Ocp | 1.0 | 1.3 | 2.0 | 1.5 | 9.3 | 1.2 | 1.1 | 5.5 | 0.0 | 27.3 |
| 1100-1200 | Pro | 0.7 | 40.7 | 4.8 | 0.6 | 2.4 | 27.3 | 20.7 | 1.3 | 0.0 | 1.3 |
| | Ocp | 1.1 | 1.3 | 1.9 | 2.3 | 10.5 | 1.2 | 1.1 | 4.5 | 0.0 | 26.8 |
| 1200-1300 | Pro | 1.5 | 42.4 | 5.2 | 0.8 | 2.6 | 22.5 | 22.2 | 1.5 | 0.0 | 1.3 |
| | Ocp | 1.2 | 1.4 | 1.8 | 3.3 | 11.5 | 1.2 | 1.1 | 7.1 | 0.0 | 27.3 |
| 1300-1400 | Pro | 1.4 | 44.2 | 5.5 | 0.8 | 1.8 | 23.1 | 21.2 | 1.0 | 0.0 | 1.2 |
| | Ocp | 1.0 | 1.4 | 1.6 | 6.7 | 11.1 | 1.2 | 1.1 | 11.5 | 0.0 | 30.2 |
| 1400-1500 | Pro | 1.3 | 39.0 | 4.9 | 1.2 | 2.2 | 24.8 | 23.8 | 1.5 | 0.0 | 1.2 |
| | Ocp | 1.0 | 1.4 | 1.8 | 2.7 | 12.8 | 1.2 | 1.1 | 9.2 | 0.0 | 25.0 |
| 1500-1600 | Pro | 0.7 | 38.5 | 3.7 | 0.5 | 1.8 | 26.0 | 26.6 | 1.0 | 0.0 | 1.2 |
| | Ocp | 1.1 | 1.2 | 1.8 | 3.9 | 11.0 | 1.2 | 1.2 | 12.2 | 0.0 | 24.2 |
| 1600-1700 | Pro | 1.3 | 42.1 | 4.5 | 0.9 | 2.3 | 24.6 | 22.1 | 1.1 | 0.0 | 1.2 |
| | Ocp | 1.2 | 1.4 | 1.7 | 3.3 | 11.6 | 1.3 | 1.1 | 15.3 | 0.0 | 38.7 |
| 1700-1800 | Pro | 2.7 | 49.7 | 4.3 | 0.5 | 2.8 | 23.5 | 13.6 | 1.7 | 0.0 | 1.2 |
| | Ocp | 1.1 | 1.4 | 1.8 | 1.9 | 15.4 | 1.3 | 1.1 | 11.4 | 0.0 | 55.1 |
| 1800-1900 | Pro | 2.9 | 63.6 | 5.1 | 0.4 | 2.7 | 14.4 | 7.1 | 2.6 | 0.1 | 1.2 |
| | Ocp | 1.1 | 1.2 | 1.7 | 2.3 | 15.0 | 1.4 | 1.1 | 16.6 | 1.0 | 68.1 |
| 1900-2000 | Pro | 3.0 | 65.6 | 5.1 | 0.1 | 3.1 | 11.6 | 8.0 | 1.9 | 0.0 | 1.6 |
| | Ocp | 1.1 | 1.3 | 1.8 | 2.0 | 15.0 | 1.1 | 1.1 | 14.0 | 0.0 | 34.2 |
| 2000-2100 | Pro | 1.9 | 62.6 | 8.4 | 0.6 | 3.7 | 12.8 | 7.5 | 0.8 | 0.0 | 1.6 |
| | Ocp | 1.1 | 1.4 | 1.6 | 2.2 | 9.0 | 1.2 | 1.1 | 13.4 | 0.0 | 28.9 |
| 2100-2200 | Pro | 2.0 | 63.7 | 10.1 | 0.3 | 3.0 | 10.4 | 6.8 | 1.8 | 0.0 | 1.9 |
| | Ocp | 1.1 | 1.1 | 1.8 | 1.0 | 9.8 | 1.2 | 1.1 | 12.0 | 0.0 | 22.9 |
| 2200-2300 | Pro | 1.8 | 62.2 | 10.7 | 0.3 | 3.1 | 12.6 | 6.1 | 1.3 | 0.1 | 1.9 |
| | Ocp | 1.1 | 1.4 | 1.6 | 4.0 | 9.7 | 1.2 | 1.0 | 14.3 | 11.0 | 19.6 |
| 16 hours | Pro | 1.7 | 49.5 | 5.7 | 0.6 | 2.6 | 20.2 | 16.9 | 1.5 | 0.1 | 1.3 |
| | Ocp | 1.1 | 1.3 | 1.7 | 3.5 | 12.6 | 1.3 | 1.1 | 12.9 | 2.4 | 38.5 |

Legend: Pro. Proportion of vehicles in % (Sum may not add up to 100% due to figure rounding)*

Ocp. Average occupancy of vehicles including both driver and passengers*

M&H Medium and Heavy

* All traffic data are collected from combined bounds